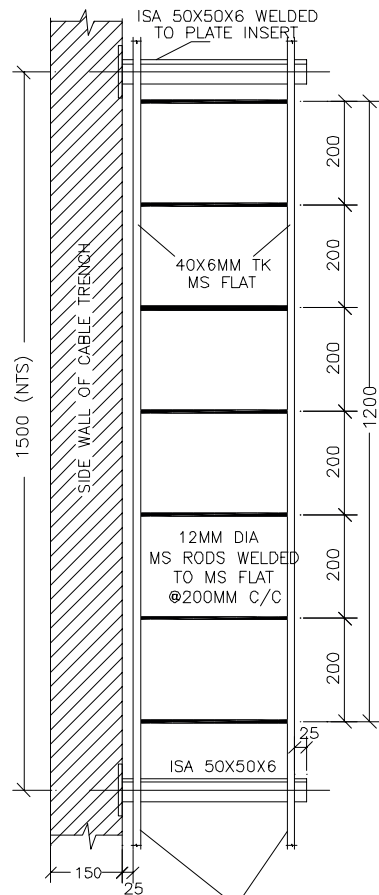


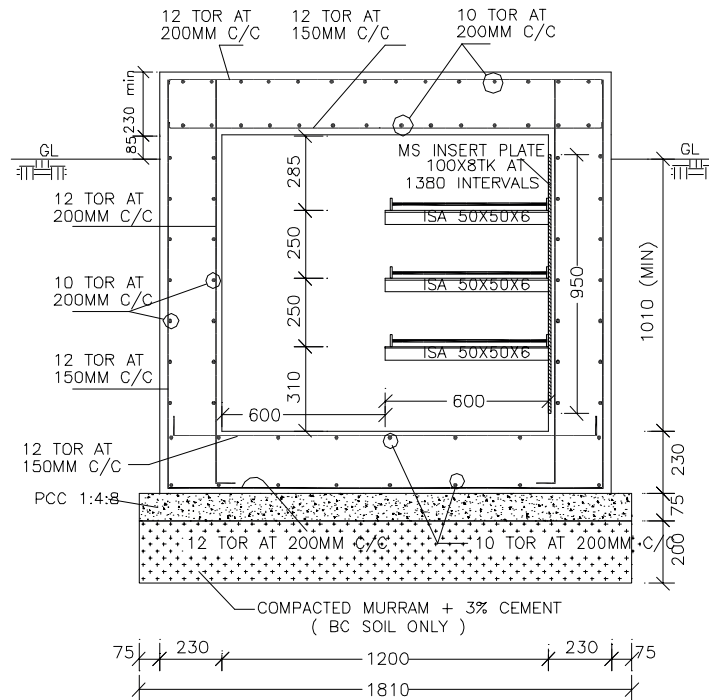
FNAME

REVDATE

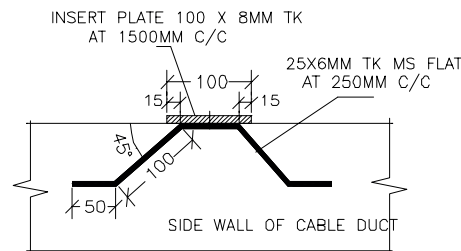
USER



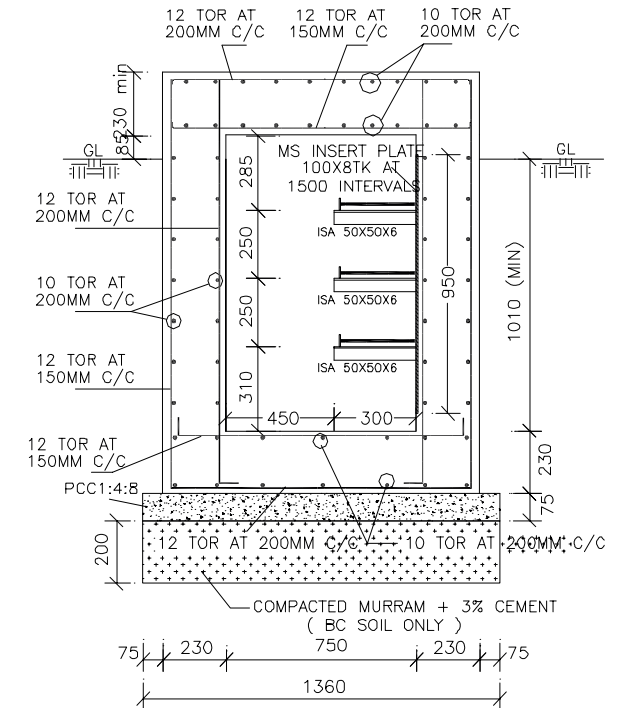
CABLE TRAY DETAILS (TYPICAL)



CABLE DUCT - SSY - TYPE-1



DETAILS OF INSERT PLATE &amp; LUGS.



CABLE DUCT - SSY - TYPE-2

## NOTES:

1. ALL DIMENSIONS ARE IN MMS ONLY UNLESS OTHERWISE SPECIFIED.
2. DONOT SCALEOUT THIS DRG, FOLLOW ONLY THE WRITTEN DIMENSIONS.
3. ALL STRUCTURAL CONCRETE SHALL BE M20 GRADE.
4. REINFORCEMENT SHALL BE Fe 415 GRADE.
5. SPACING OF CLIPS: HORIZONTAL - TWICE THE WALL THICKNESS, VERTICAL - 15 DIA OF REINFORCEMENT OR 300MM WHICH EVER IS LESS.
6. REINFORCEMENT OF COVER SLAB SHALL BE PLACED IN THE CENTRE TO AVOID REVERSAL OF FACE.

KARNATAKA POWER TRANSMISSION CORPN LTD

TYPICAL CROSS SECTIONAL DETAILS OF RCC CABLE DUCTS AT ROAD CROSSING. (SSY TYPE-1&amp;2) FOR 110KV &amp; 66K STATIONS

DRG NO: CEE (P & C) / S E (CIVIL) / 06-07/06-66 / 009  
DATED: NOT TO SCALE

G.R.RAJU

HDM

DRN

AEE(C)

DGN

SE(CIVIL)

SUB

CHIEF ENGR ELE

REC

APPROVED

TENDERING AND PROCUREMENT

THE DEPTH AND WIDTH OF CABLE DUCT SHALL BE THE CABLE DUCT TYPE CROSSING THE ROAD  
\*\*TRAYS ARE TYPICAL ARRANGEMENT. THE TRAY ARRANGEMENT SHALL CONFIRM TO THE TYPE OF DUCT